

# Capacitor Switching Contactors

Data according to IEC 947-4-1, EN 60947-4-1, VDE 0660

Main Contacts		Type	K3-18NK	K3-24K	K3-32K	K3-50K	K3-62K	K3-74K	K3-90K	K3-115K
<b>Utilization category AC6b</b>										
<b>Switching of non-reactive and reactive 3-phase capacitor banks</b>										
Ambient temperature ≤50°C										
Rated operational current I <sub>e</sub>	690V	A	0-18	14-28	14-36	30-48	30-72	30-108 <sup>1)</sup>	50-115	50-144 <sup>2)</sup>
Rated operational power	220-240V	kVAr	0-7	5-11	5-14	12-20	12-28	12-33	20-45	20-55 <sup>2)</sup>
	380-400V	kVAr	0-12,5	10-20	10-25	20-33,3	20-50	20-75 <sup>1)</sup>	33-80	33-100 <sup>2)</sup>
	415-440V	kVAr	0-13	10,5-22	10,5-27	23-36	23-53	23-75 <sup>1)</sup>	36-82	36-103 <sup>2)</sup>
	500V	kVAr	0-15	12-25	12-30	26-40	26-60	26-75	43-100	43-120 <sup>2)</sup>
	525V	kVAr	0-15	12-25	12-32	26-43	26-64	26-80	45-105	45-125 <sup>2)</sup>
	660-690V	kVAr	0-20	17-33	17-41	36-55	36-82	36-120	57-120	57-148 <sup>2)</sup>
	1000V	kVAr	-	-	-	-	-	-	85-160	85-200 <sup>2)</sup>
Ambient temperature ≤60°C										
Rated operational current I <sub>e</sub>	690V	A	0-18	14-28	14-36	30-48	30-72	30-87	50-108	50-130 <sup>2)</sup>
Rated operational power	220-240V	kVAr	0-7	5-11	5-14	12-20	12-28	12-30	20-40	20-50 <sup>2)</sup>
	380-400V	kVAr	0-12,5	10-20	10-25	20-33,3	20-50	20-60	33-75	33-90 <sup>2)</sup>
	415-440V	kVAr	0-13	10,5-22	10,5-27	23-36	23-53	23-64	36-77	36-93 <sup>2)</sup>
	500V	kVAr	0-15	12-25	12-30	26-40	26-60	26-70	43-90	43-110 <sup>2)</sup>
	525V	kVAr	0-15	12-25	12-32	26-43	26-64	26-75	45-95	45-115 <sup>2)</sup>
	660-690V	kVAr	0-20	17-33	17-41	36-55	36-82	36-100	57-120	57-148 <sup>2)</sup>
	1000V	kVAr	-	-	-	-	-	-	85-150	85-180 <sup>2)</sup>

# Contactors

Data according to IEC 947-4-1, EN 60947-4-1, VDE 0660


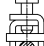
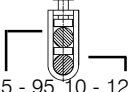
Main Contacts		Type	K3-10	K3-14	K3-18	K3-22	K3-24	K3-32	K3-40	K3-50	K3-62	K3-74	K3-90	K3-115
<b>Utilization category AC6b</b>														
<b>Switching of reactive capacitor banks</b>														
Ambient temperature ≤50°C														
Rated operational current I <sub>e</sub>	690V	A	8	13	18	20	28	36	42	48	72	108 <sup>1)</sup>	115	144 <sup>2)</sup>
Rated operational power	220-240V	kVAr	2,9	5	7	7,5	11	14	16	20	28	33	45	55 <sup>2)</sup>
	380-400V	kVAr	5	9	12,5	13	20	25	27,5	33,3	50	75 <sup>1)</sup>	80	100 <sup>2)</sup>
	415-440V	kVAr	5,5	9,5	13	14	22	27	30	36	53	75 <sup>1)</sup>	82	103 <sup>2)</sup>
	500V	kVAr	6	11	15	17	25	30	36	40	60	75	100	125 <sup>2)</sup>
	525V	kVAr	6	11	15	17	25	32	36	43	64	80	105	125 <sup>2)</sup>
	660-690V	kVAr	8	15	20	22	33	41	48	55	82	120	120	148 <sup>2)</sup>
	1000V	kVAr	-	-	-	-	-	-	-	-	-	-	160	200 <sup>2)</sup>
Ambient temperature ≤60°C														
Rated operational current I <sub>e</sub>	690V	A	8	13	18	20	28	36	42	48	72	87	108	130 <sup>2)</sup>
Rated operational power	220-240V	kVAr	2,9	5	7	7,5	11	14	16	20	28	30	40	50 <sup>2)</sup>
	380-400V	kVAr	5	9	12,5	13	20	25	27,5	33,3	50	60	75	90 <sup>2)</sup>
	415-440V	kVAr	5,5	9,5	13	14	22	27	30	36	53	64	77	93 <sup>2)</sup>
	500V	kVAr	6	11	15	17	25	30	36	40	60	70	90	110 <sup>2)</sup>
	525V	kVAr	6	11	15	17	25	32	36	43	64	75	95	115 <sup>2)</sup>
	660-690V	kVAr	8	15	20	22	33	41	48	55	82	100	120	148 <sup>2)</sup>
	1000V	kVAr	-	-	-	-	-	-	-	-	-	-	150	180 <sup>2)</sup>

1) Consider the max. thermal current: I<sub>th</sub> 130A

2) Consider the min. cross-section of conductor at max. load

# Contactors

## Data according to IEC 947-4-1, EN 60947-4-1, VDE 0660

Main Contacts	Type	K3-10	K3-14	K3-18	K3-22	K3-24	K3-32	K3-40	K3-50	K3-62	K3-74	K3-90	K3-115	
<b>Rated insulation voltage</b> $U_i$ <sup>1)</sup>	V AC	690	690	690	690	690	690	690	690	690	690	1000	1000	
Rated operational current $I_e$ ( $=I_{th}$ ) at 40°C, open 690V	A	25	25	32	32	50	65	80	110	120	130	160	200	
<b>Maximum ambient temperature</b>														
Operation	open °C	-40 to +60 (+90) <sup>2)</sup>												
	enclosed °C	-40 to +40												
Storage	°C	-50 to +90												
<b>Short circuit protection</b>														
Coordination-type "1" acc. to IEC 947-4-1														
Contact welding without hazard of persons														
fuse size	from gL (gG) A	35	35	35	35	50	63	63	80	125	160	160	160	
	to gL (gG) A	63	63	63	63	80	100	100	160	160	200	200	250	
<b>Cable cross-sections</b>														
for contactors without thermal overload relay														
1 cable per clamp														
main connector	solid or stranded mm <sup>2</sup>	0,75 - 6				1,5 - 25			4 - 50			0,5 - 95		10 - 120
	flexible mm <sup>2</sup>	1 - 4				2,5 - 16			10 - 35			0,5 - 70		25 - 95
	flexible with multicore cable end mm <sup>2</sup>	0,75 - 4				1,5 - 16			6 - 35			0,5 - 70		10 - 95
2 cables per clamp														
	solid or stranded mm <sup>2</sup>	6+(1-6) / 4+(0,75-4)				16+(2,5-6) / 10+(4-10)			50+4 / 35+6 / 25+(6-16)			top below		0,5-95 + 10-120
	flexible mm <sup>2</sup>	2,5+(0,75-2,5) / 1,5+(0,75-1,5)				6+(4-6) / 4+(2,5-4)			16+(6-16) / 10+(6-16)			0,5-70 + 10-95		
		6+(1,5-6) / 4+(1-4)				16+(2,5-6) / 10+(4-10)			50+(4-10) / 35+(4-16)			0,5-70 + 10-95		
		2,5+(0,75-2,5) / 1,5+(0,75-1,5)				6+(4-6) / 4+(2,5-4)			25+(4-25) / 16+(4-16)					
Cables per clamp		2				2			2			1+1		
Screw / screw driver		M3,5 / Pz2				M5 / Pz2			M6 / Pz3			M8 / 4mm-inbus		
Tightening torque	Nm/lb.inch	0,8-1,4 / 7-12				2,5-3 / 22-26			3,5-4,5 / 31-40			4-6,5 / 35-57		
for main connector	solid AWG	18 - 10				16 - 10			12 - 10			-		
	flexible AWG	18 - 10				14 - 4			10 - 0			-		
Cables per clamp		2				1			1			-		
	solid AWG	10+(16-10) / 12+(18-12)				10+(16-10) / 12+(18-12)			10+(12-10) / 12+12			top below		18-10 -
	flexible AWG	14+(18-14) / 16+(18-16)				14+(18-14) / 16+(18-16)			1+(12-10) / 2+(8-12)			18-3/0		8-4/0
		10+(14-10) / 12+(18-12)				4+(18-12) / 6+(18-8)			3+(12-8) / 4+(10-6)			1+1		
		14+(18-14) / 16+(18-16)				8+(18-8) / 10+(18-12)								
Cables per clamp		2				2			2					
<b>Mechanical life</b>														
AC operated	S x 10 <sup>6</sup>	10				10			10			5		
DC operated	S x 10 <sup>6</sup>	10				10			10			5		
<b>Short time current</b>	10s-current A	96	120	144	176	184	240	296	360	504	592	680	880	
<b>Power loss</b>														
per pole	at $I_e$ /AC3 400V W	0,21	0,35	0,5	0,75	0,7	1,3	2	2,2	3,9	5,5	4,3	6,0	
<b>Auxiliary Contacts</b>														
<b>Rated insulation voltage</b> $U_i$ <sup>1)</sup>	V~	690				-			-			-		
<b>Thermal rated current</b> $I_{th}$ to 690V														
Ambient temperature	40°C A	16				-			-			-		
	60°C A	12				-			-			-		
<b>Utilization category AC15</b>	220-240V A	12				-			-			-		
Rated operational current $I_e$	380-415V A	4				-			-			-		
	440V A	4				-			-			-		
	500V A	3				-			-			-		
	660-690V A	1				-			-			-		
<b>Utilization category DC13</b>	60V A	8				-			-			-		
Rated operational current $I_e$	110V A	1				-			-			-		
	220V A	0,1				-			-			-		
<b>Short circuit protection</b>														
short-circuit current 1kA, contact welding not accepted														
max. fuse size	gL (gG) A	25				-			-			-		

1) Suitable at 690V for: earthed-neutral systems, overvoltage category I to IV, pollution degree 3 (standard-industry):  $U_{imp} = 8kV$ .

Data for other conditions on request.

2) With reduced control voltage range 0,9 up to  $1,0 \times U_s$  and with reduced rated current  $I_e$ /AC1 according to  $I_e$ /AC3

## Data according to IEC 947-4-1, EN 60947-4-1, VDE 0660

Type	K3-10	K3-14	K3-18	K3-22	K3-24	K3-32	K3-40	K3-50	K3-62	K3-74	K3-90	K3-115
<b>Control Circuit</b>												
<b>Power consumption of coils</b>												
AC operated	inrush VA	33-45			90-115			140-165			190-280	
	sealed VA	7-10			9-13			13-18			2,5-5	
	W	2,6-3			2,7-4			5,4-7			2,5-5	
DC operated	inrush W	75			140			200			190-280	
	sealed W	2			2			6			2,5-5	
<b>Operation range of coils</b>												
in multiples of control voltage $U_s$												
	AC operated	0,85-1,1			0,85-1,1			0,85-1,1			0,85-1,1	
	DC operated	0,8-1,1			0,8-1,1			0,8-1,1			0,8-1,1	
<b>Switching time</b>												
at control voltage $U_s \pm 10\%$ <sup>1) 2)</sup>												
AC operated	make time ms	8-16			10-25			12-28			20-35	
	release time ms	5-13			8-15			8-15			35-50	
	arc duration ms	10-15			10-15			10-15			10-15	
DC operated	make time ms	8-12			10-20			12-23			20-35	
	release time ms	8-13			10-15			10-18			35-50	
	arc duration ms	10-15			10-15			10-15			10-15	
<b>Cable cross-section</b>												
Auxiliary connector	solid mm <sup>2</sup>	0,75-6			-			-			-	
	flexible mm <sup>2</sup>	1-4			-			-			-	
	flexible with multicore cable end mm <sup>2</sup>	0,75-4			-			-			-	
Magnet coil	solid mm <sup>2</sup>	0,75-2,5			0,75-2,5			0,75-2,5			0,75-2,5	
	flexible mm <sup>2</sup>	0,5-2,5			0,5-2,5			0,5-2,5			0,5-2,5	
	flexible with multicore cable end mm <sup>2</sup>	0,5-1,5			0,5-1,5			0,5-1,5			0,5-1,5	
Clamps per pole		2			2			2			2	
Screw / screw driver		M3,5 / Pz2			M3,5 / Pz2			M3,5 / Pz2			M3,5 / Pz2	
Tightening torque	Nm/lb.inch	0,8-1,4 / 7-12			0,8-1,4 / 7-12			0,8-1,4 / 7-12			0,8-1,4 / 7-12	
Auxiliary connector	solid AWG	18 - 10-			-			-			-	
	flexible AWG	18 - 10			-			-			-	
Magnet coil	solid AWG	14 - 12			14 - 12			14 - 12			14 - 12	
	flexible AWG	18 - 12			18 - 12			18 - 12			18 - 12	
Clamps per pole		2			2			2			2	

## Capacitor Switching Contactors for North America

### Data according to UL508

Main Contacts (cULus)	Type	K3-18NK	K3-24K	K3-32K	K3-50K	K3-62K	K3-74K	K3-90K	K3-115K
Rated operational power of 3-phase capacitor banks at 60Hz (3ph)	110-120V kVAr	0-3,5	3-5,5	3-7	6,5-10	6,5-15	6,5-18 <sup>3)</sup>	10-24	10-28 <sup>4)</sup>
	200V kVAr	0-6	4,5-10	4,5-12,5	10-16,7	10-25	10-32 <sup>3)</sup>	17-40	17-46 <sup>4)</sup>
	220-240V kVAr	0-7	5,5-11	5,5-15	12,5-20	12,5-30	12,5-36 <sup>3)</sup>	20-47	20-56 <sup>4)</sup>
	440-480V kVAr	0-15	11,5-25	11,5-30	25-40	25-60	25-72 <sup>3)</sup>	40-95	40-114 <sup>4)</sup>
	550-600V kVAr	0-18	14,5-30	14,5-35	31-50	31-75	31-90 <sup>3)</sup>	50-120	50-143 <sup>4)</sup>
Fuse Class RK5 / Short-circuit current	A/kA	50/5	90/5	125/5	200/5	250/5	300/5	300/10	300/10
Fuse Class T / Short-circuit current	A/kA	70/100	110/100	150/100	175/100	175/100	175/100	300/100 <sup>5)</sup>	300/100 <sup>5)</sup>
Rated voltage	V	600	600	600	600	600	600	600	600
<b>Auxiliary Contacts (cULus)</b>		A600	-	-	-	-	-	-	-

1) Total breaking time = release time + arc duration

2) Values for delay of the release time of the make contact and the make time of the break contact will be increased, if magnet coils are protected against voltage peaks (varistor, RC-unit, diode-unit)

3) Consider the max. thermal current of the contactor K3-74A:  $I_m$  130A

4) Consider the min. cross-section of conductor at max. load

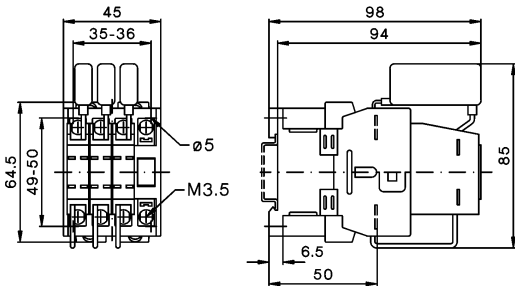
5) Class T and Class RK1

# Contactors

## Dimensions

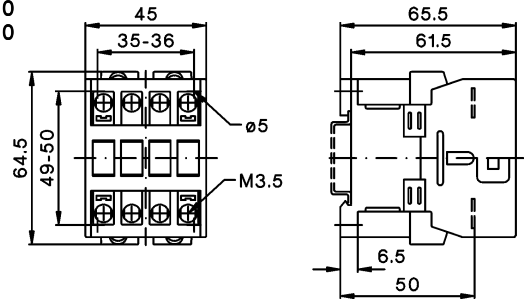
Capacitor switching contactors, AC operated

K3-18NK..

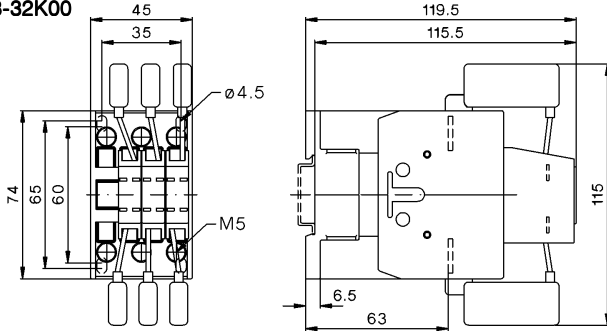


Contactors AC-operated

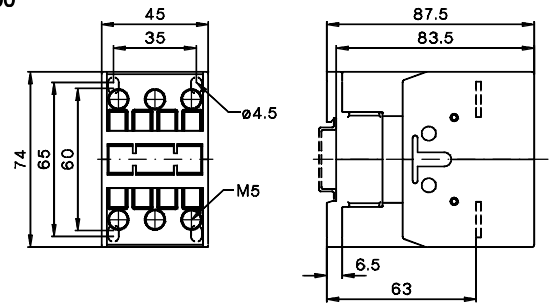
K3-10ND10  
K3-14ND10  
K3-18ND10  
K3-22ND10



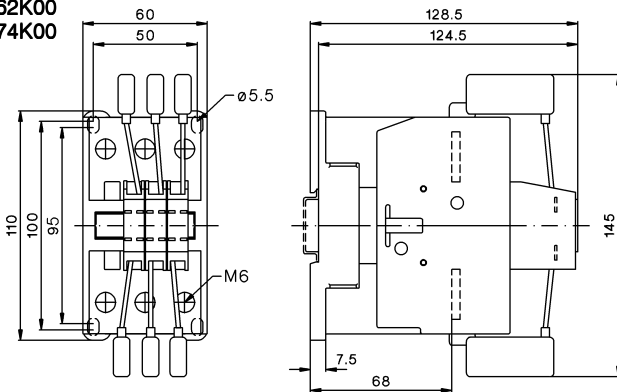
K3-24K00  
K3-32K00



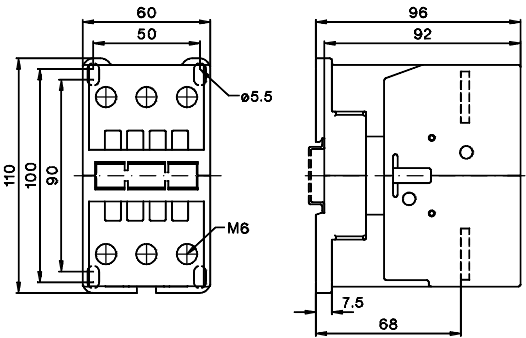
K3-24A00  
K3-32A00  
K3-40A00



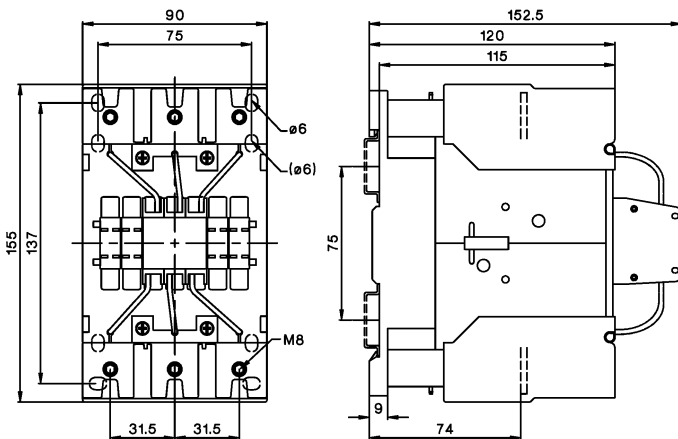
K3-50K00  
K3-62K00  
K3-74K00



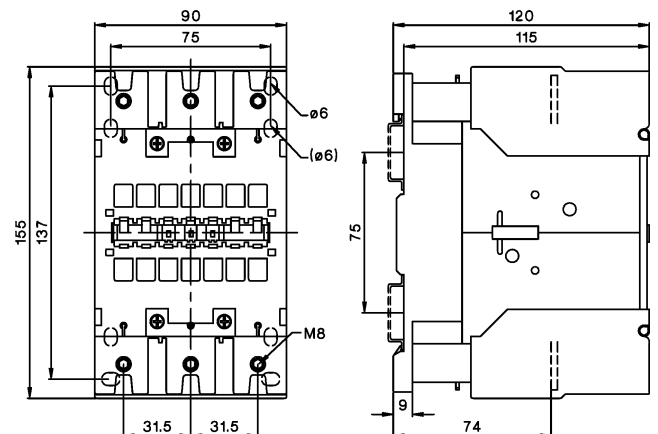
K3-50A00  
K3-62A00  
K3-74A00



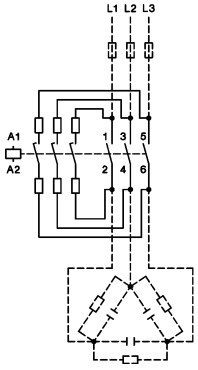
K3-90K00  
K3-115K00



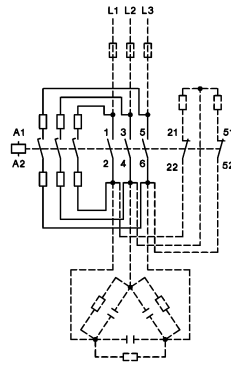
K3-90A00  
K3-115A00



## Typical Circuit Diagram of Capacitor Switching Contactors



Typical Circuit Diagram



**Wiring Diagram for Quick Discharge Resistors**

Make sure that the current of the discharge resistors is not higher than the rated current (AC1) of the auxiliary contacts

## Contactor operation at direct switching of capacitors

### Theoretic view of function

#### Make

In case of the pre-contacts during make, the current peaks are attenuate by resistor wires. These current peaks would weld the main-contacts of contactor and they are also not good for the capacitors.

The total resistance of the resistor wires is mostly ohmic, the inductive one can be ignored. The looking like a coil is only a case of construction.

The single controlled pre-contacts are increasing the safety of operating, in opposite of contamination during operation.

#### Operation:

During operation the resistor wires are not getting warmer, because they are not in the circuit.

#### Break:

Important: these contactors can be used for both installations, because the pre-contacts have no function during break, thus means that the peaks of the break-over voltage (power) of the chokes can't make any damage.